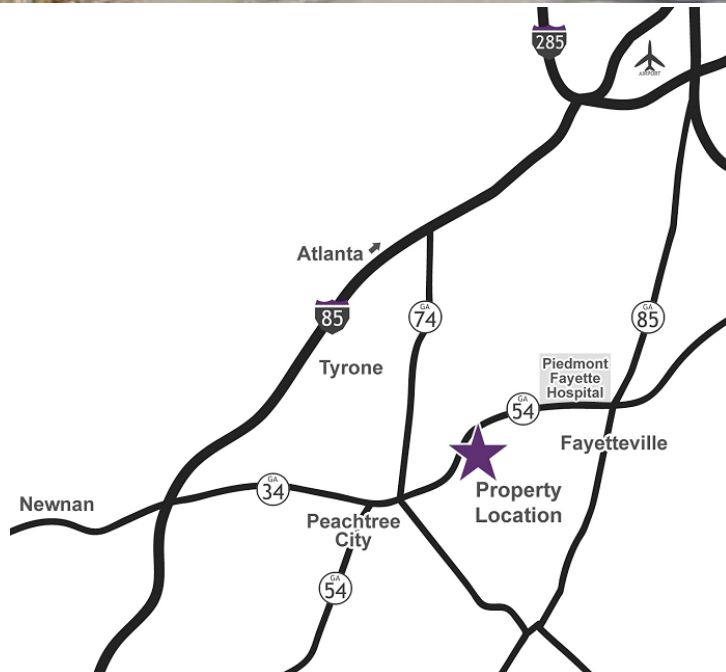




OFFICE OR MEDICAL SPACE FOR LEASE

**Parkside I Office Park
406 Stevens Entry
Peachtree City, GA**

- 2,446 SF Available
- 1-Story Class "A" Office Building
- Former Physical Therapy Suite
- Adjacent to High End Residential, Shopping, Dining and Other Retail
- Excellent Access to I-85 and Highway 74
- Rent Rate: \$14.50 Net on 5-Year Term
- Beautifully Landscaped and Maintained Grounds
- County: Fayette



For more information

770-389-9100

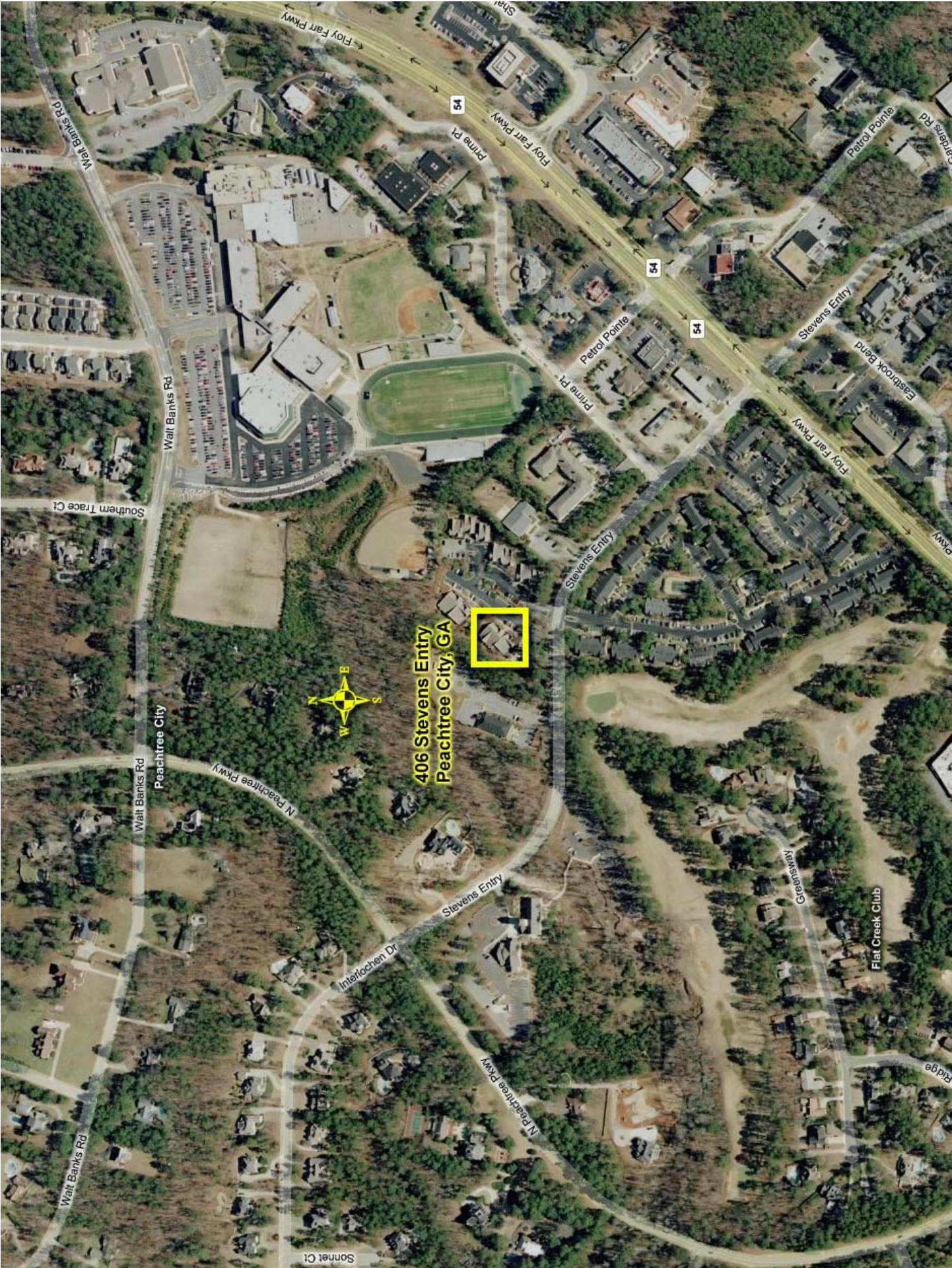
Group Six Real Estate, LLC
900 Westpark Dr, Suite 300
Peachtree City, GA 30269
P 770-389-9100
F 770-631-7274

No warranty or representation, express or implied, is made as to the accuracy of the information contained herein, and the same is submitted subject to errors, omissions, or other conditions, withdrawal without notice and to any special listing conditions imposed by our principals.

Or visit us at

www.groupvi.com





406 Stevens Entry
Peachtree City, GA



OFFICE OR MEDICAL SPACE FOR LEASE

Parkside I Office Park
406 Stevens Entry
Peachtree City, GA

- 2,446 SF Available
- 1-Story Class "A" Office Building
- Former Physical Therapy Suite
- Adjacent to High End Residential, Shopping, Dining and Other Retail
- Excellent Access to I-85 and Highway 74
- Rent Rate: \$14.50 Net on 5-Year Term
- Beautifully Landscaped and Maintained Grounds
- County: Fayette

For more information

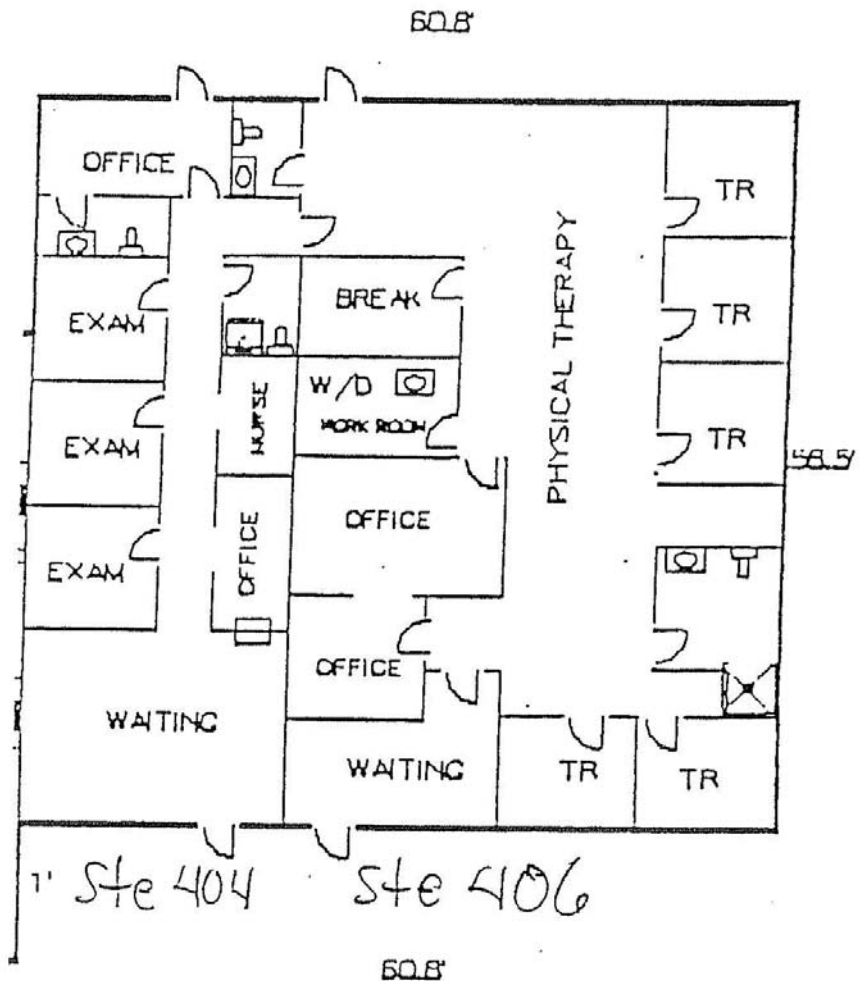
770-389-9100

Group Six Real Estate, LLC
900 Westpark Dr, Suite 300
Peachtree City, GA 30269
P 770-389-9100
F 770-631-7274

No warranty or representation, express or implied, is made as to the accuracy of the information contained herein, and the same is submitted subject to errors, omissions, or other conditions, withdrawal without notice and to any special listing conditions imposed by our principals.

Or visit us at

www.groupvi.com



NO SCALE / LAYOUT ONLY