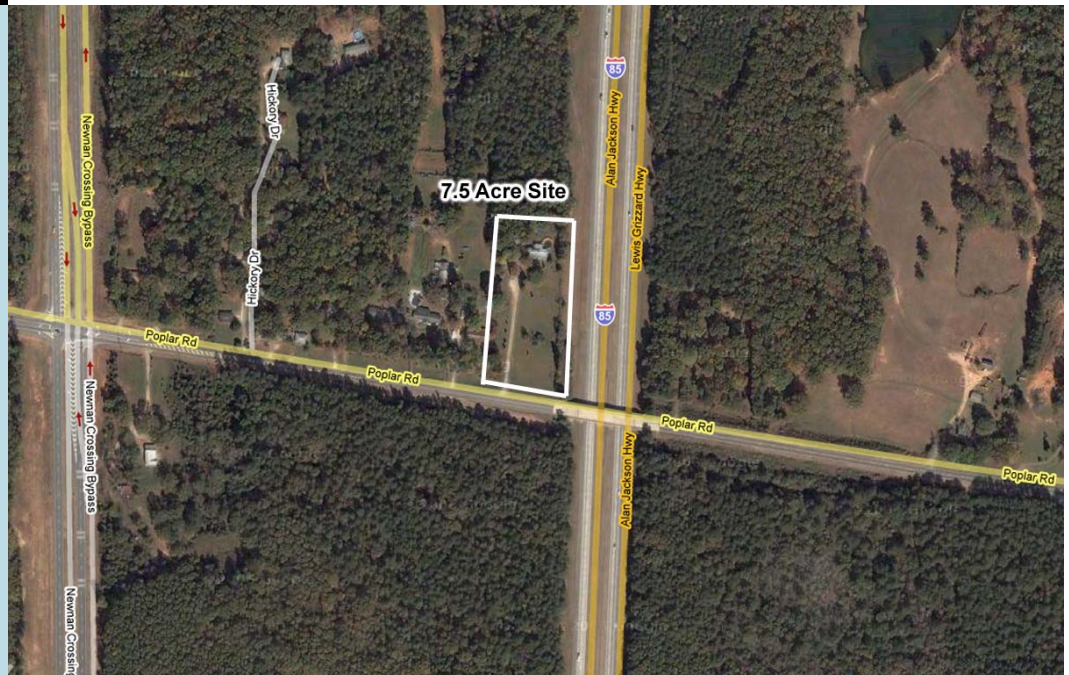




# LAND FOR SALE

## Northwest Corner of I-85 and Poplar Road Newnan, GA

- Size: 7.5 Acres
- Currently Zoned: RC (Rural Conservation)
- Excellent C-Store/Hotel Site
- Traffic Counts:  
I-85 at Poplar- 53,640 vpd  
Poplar Rd -6,020 vpd
- All Utilities Except Sewer Available
- Price: \$1,500,000
- County: Coweta



For more information

**Brent Randolph**  
770-389-9100

**Mary Ann Dossett**  
678-725-1516

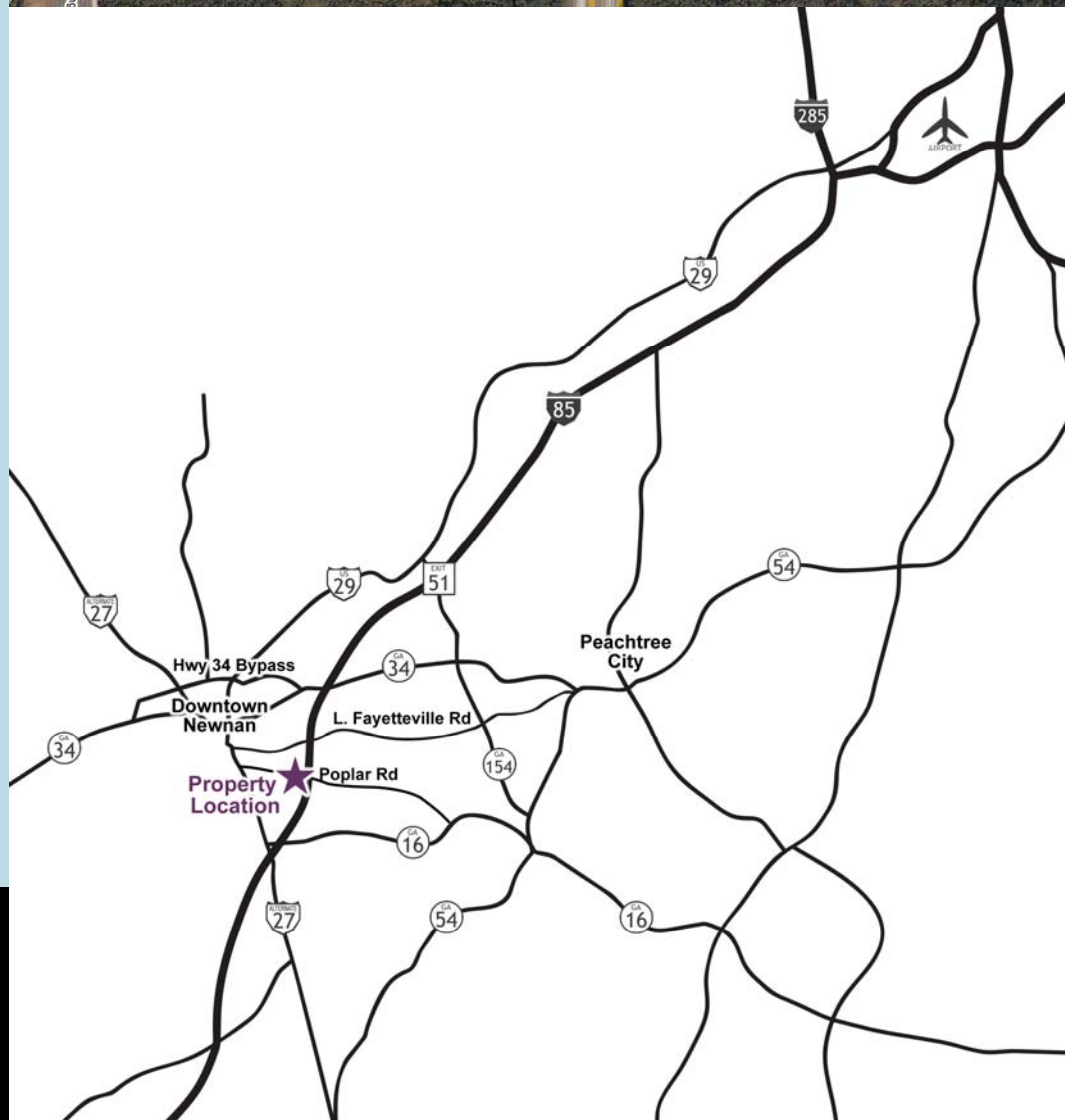
Group Six Real Estate, LLC  
900 Westpark Dr, Suite 300  
Peachtree City, GA 30269  
P 770-389-9100  
F 770-631-7274

[www.groupvi.com](http://www.groupvi.com)

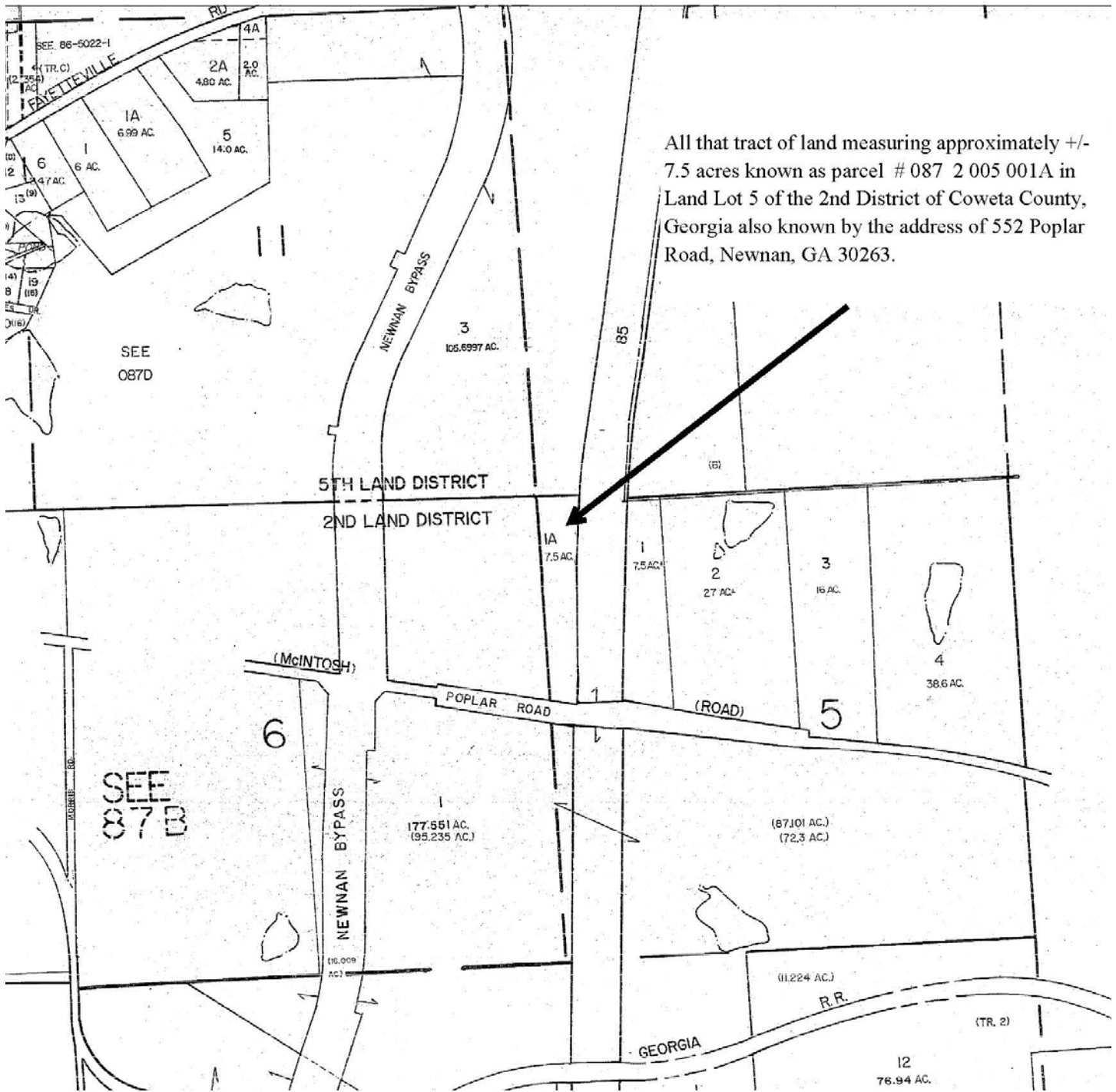
This information has been obtained from sources believed reliable. While we do not doubt its accuracy we have not verified it and make no guarantee, warranty, or representation about it.

Marketed in cooperation with

**KELLER  
WILLIAMS**  
Realty Professionals



# Northwest Corner of I-85 and Poplar Road Newnan, GA



All that tract of land measuring approximately +/- 7.5 acres known as parcel # 087 2 005 001A in Land Lot 5 of the 2nd District of Coweta County, Georgia also known by the address of 552 Poplar Road, Newnan, GA 30263.