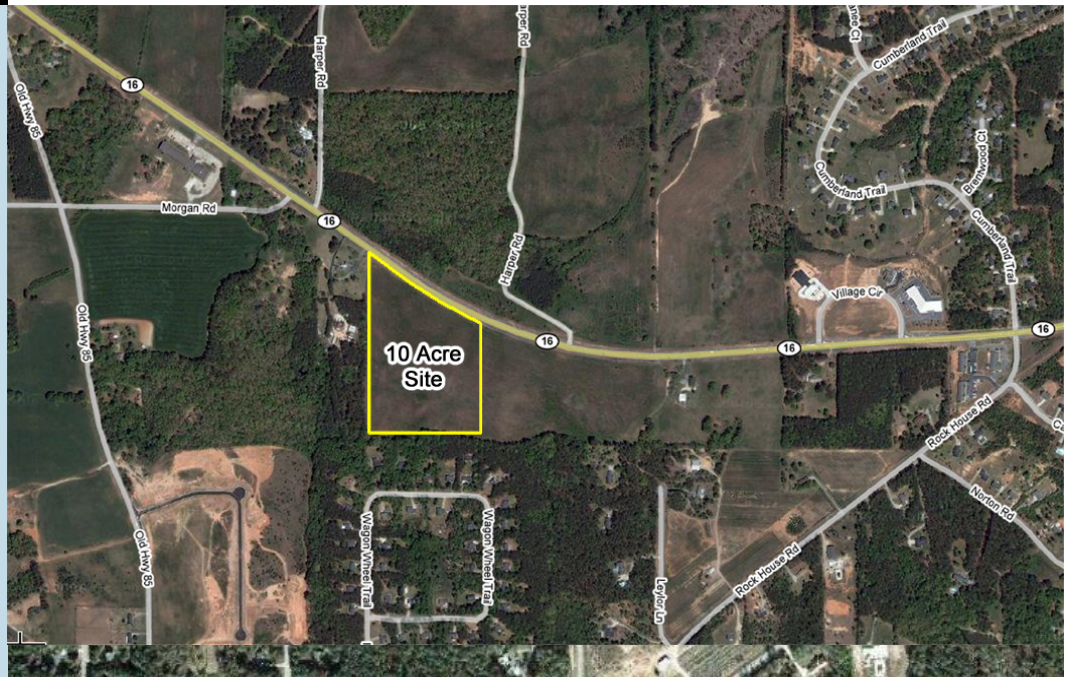




LAND FOR SALE

Hwy 16 West of Senoia Coweta County, GA

- 10 acres
- Great visibility & access
- Frontage: 483 feet on Hwy 16
- Excellent strip center site with self storage in the rear
- Traffic Counts
Hwy 16 East: 19,415 VPD
Hwy 16 West: 19,810 VPD
- GPS Coordinates:
Latitude: 33.29241405
Longitude: -84.58309735
- Price: \$49,000/acre
- Zoning: Rural Reserve
- County: Coweta



For more information

Brent Randolph
770-389-9100

Group Six Real Estate, LLC
900 Westpark Dr, Suite 300
Peachtree City, GA 30269
P 770-389-9100
F 770-631-7274

This information has been obtained from sources believed reliable. While we do not doubt its accuracy we have not verified it and make no guarantee, warranty, or representation about it.

Or visit us at

www.groupvi.com



LAND FOR SALE

REESE DEVELOPERS, INC.
P.O. BOX 129 HAWKINS, GEORGIA 30138

SURVEY FOR 10 ACRE PARCEL
OFF S.R. 16 WEST OF SENOIA
LL 200 DISTRICT 1 COMETA COUNTY, GA

REF. DATE DESCR. NO.

SHEET 1
OF 1

