



**Lexington Commons  
Lexington Circle  
Peachtree City, GA**

- 14,000 SF building with availability of 1,400 SF to 7,000 SF
- Suites Available Spring 2011
- Excellent access to Hwy 54
- Rental Rate: \$17.50 NNN
- Convenient to restaurants, banks, and major retailers
- City: Peachtree City
- County: Fayette

For more information

**Brent Randolph  
James K. Clark  
770-389-9100**

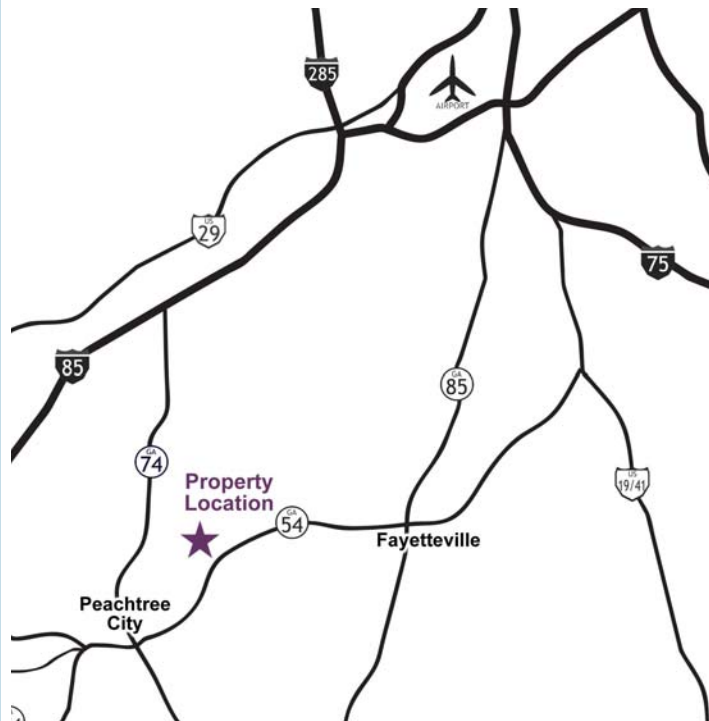
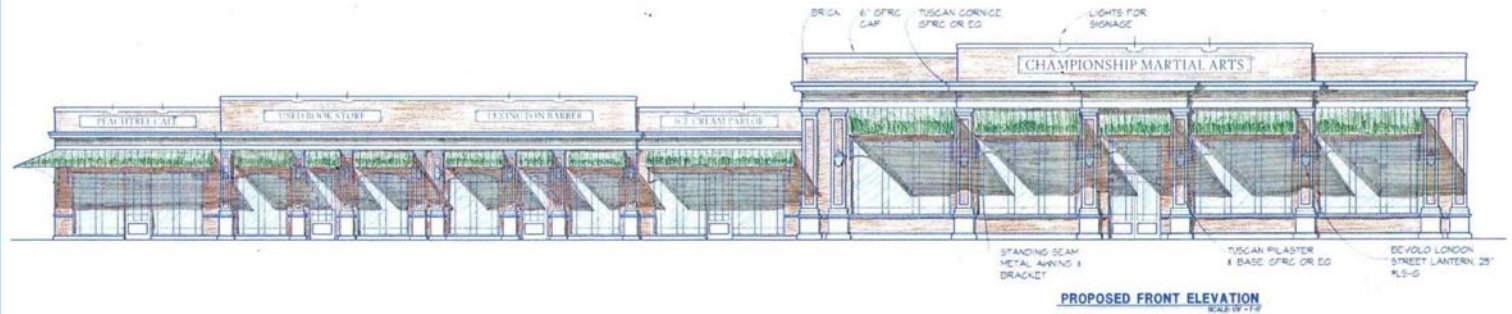
Group Six Real Estate, LLC  
900 Westpark Dr, Suite 300  
Peachtree City, GA 30269  
P 770-389-9100  
F 770-631-7274

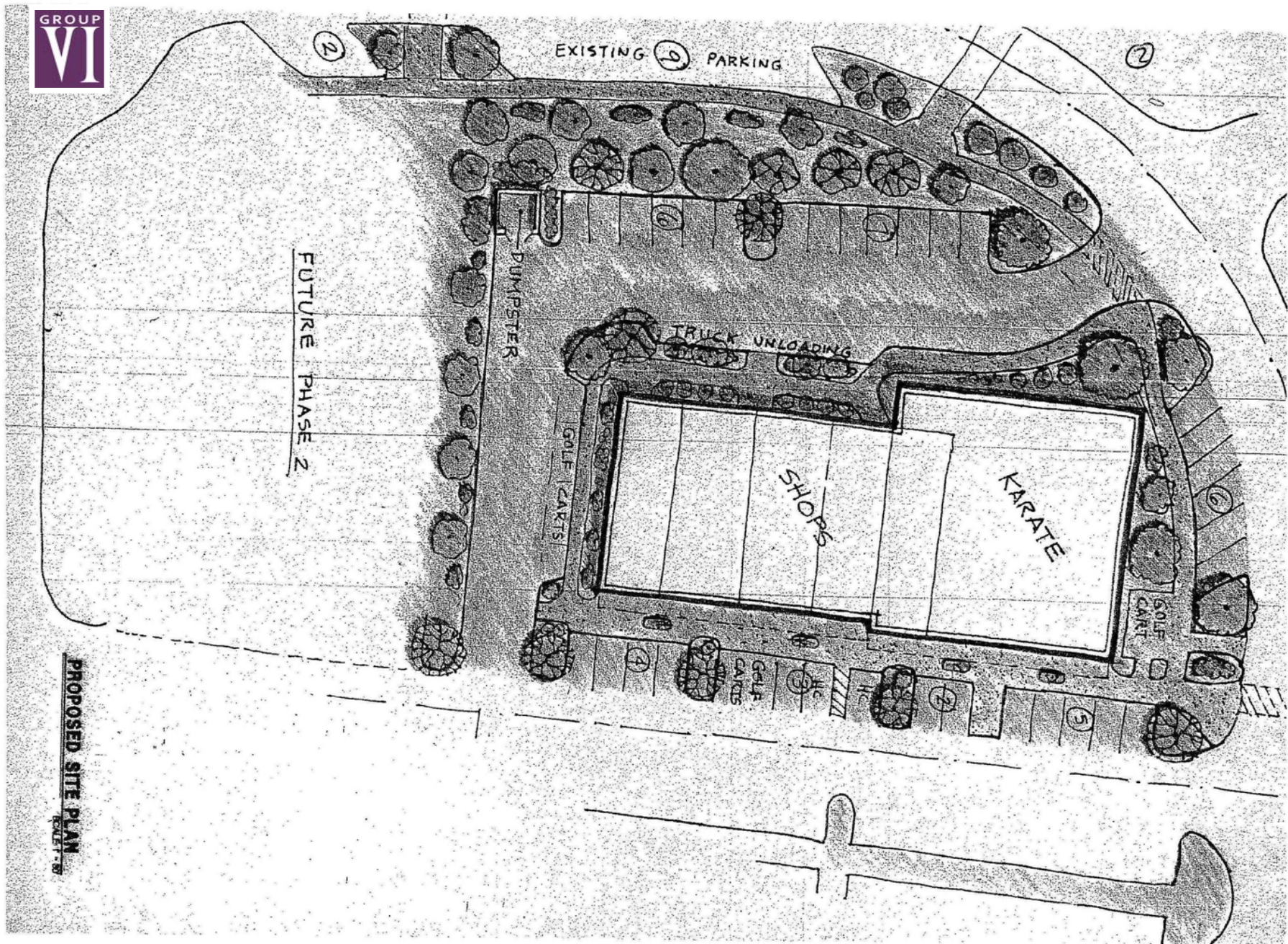
This information has been obtained from sources believed reliable. While we do not doubt its accuracy we have not verified it and make no guarantee, warranty, or representation about it.

Or visit us at

**www.groupvi.com**

# RETAIL SPACE FOR LEASE





FUTURE PHASE 2

EXISTING PARKING

PUMPSTER

GOLF CARTS

TRUCK UNLOADING

SHOPS

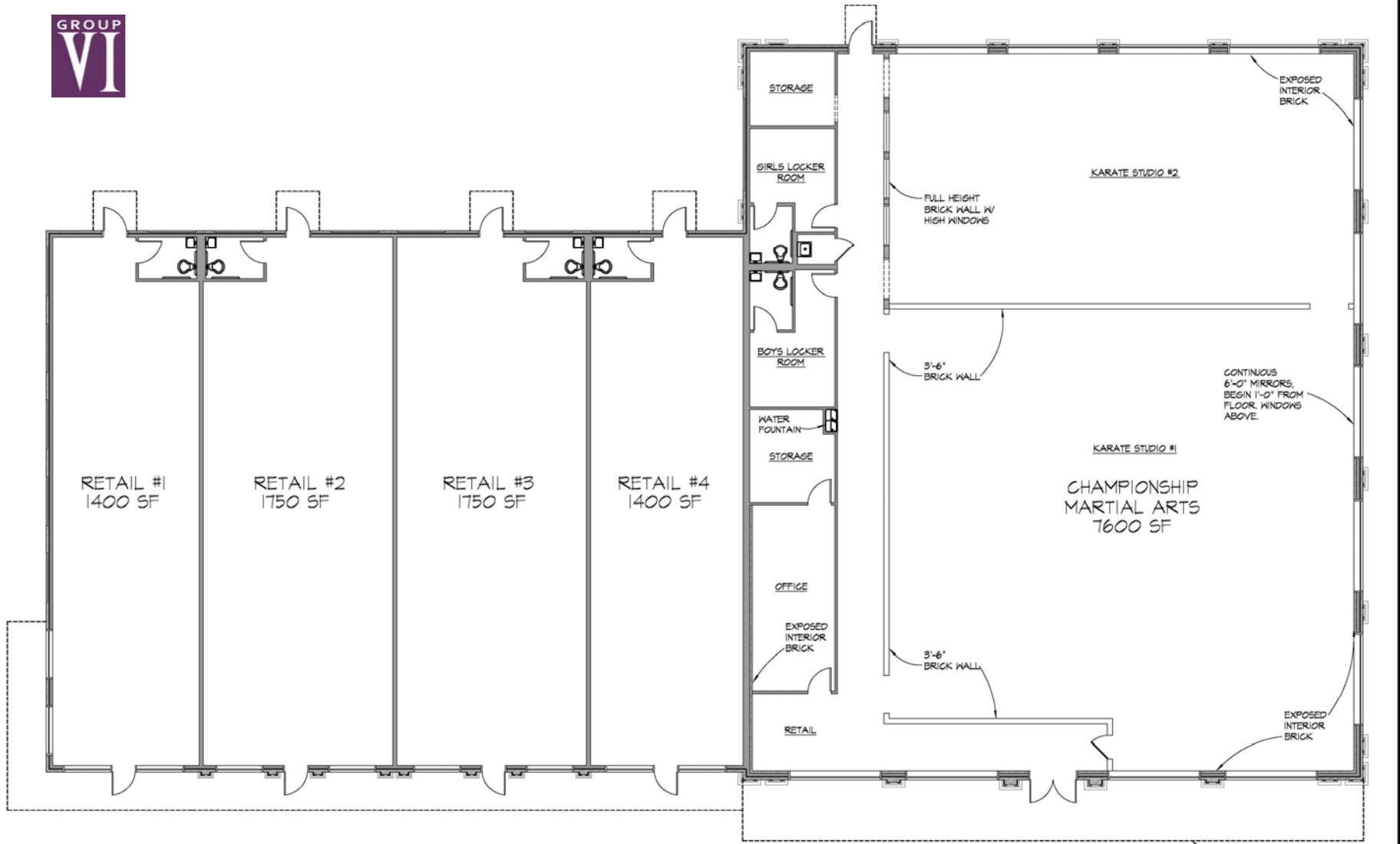
KARATE

GOLF CART

GOLF CARTS

PROPOSED SITE PLAN

SCALE 1" = 50'



**Lexington Commons  
Building #12  
Peachtree City, GA**

TOTAL LEASABLE  
AREA: 13,900 SQ. FT.

**PROPOSED FLOOR PLAN**  
SCALE 1/8" = 1'-0"



**FOREMAN | SEELEY | FOUNTAIN**  
architecture

5855 Jimmy Carter Boulevard, Suite 218, Norcross, Georgia 30071 770.729.8433  
COPYRIGHT OWNERSHIP: This drawing is the property of Foreman Seeley Fountain Architecture and may not be used, copied or revised without expressed written permission. © 2010