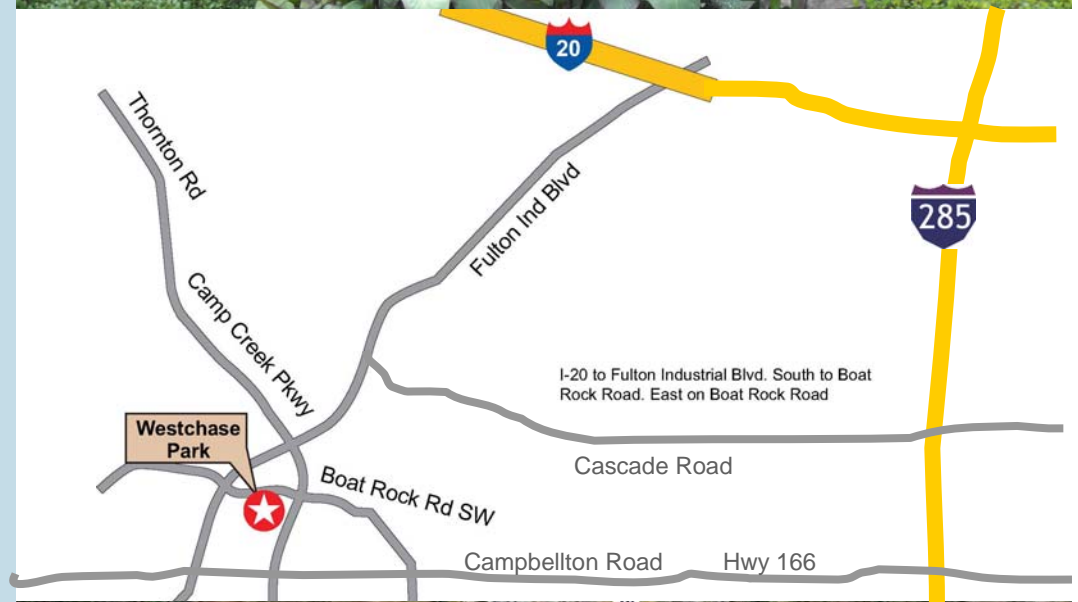




# DEVELOPED TOWNHOME SITE FOR SALE

## Westchase Glen Atlanta, GA

- Location: Camp Creek Parkway at Fulton Industrial Blvd.
- Subdivision: Boatrock Road at Westchase Lane
- 17 Developed Townhome Lots
- Foreclosure: Bank REO
- Zoning: CUP (Community Unit Plan)
- Easy access to I-20 and I-285
- Clubhouse with swim, tennis and fitness
- Minutes to Hartsfield Jackson International Airport
- County: Fulton



**James Clark**  
**770-389-9100**

Group Six Real Estate, LLC  
900 Westpark Dr, Suite 300  
Peachtree City, GA 30269  
Fax 770-631-7274

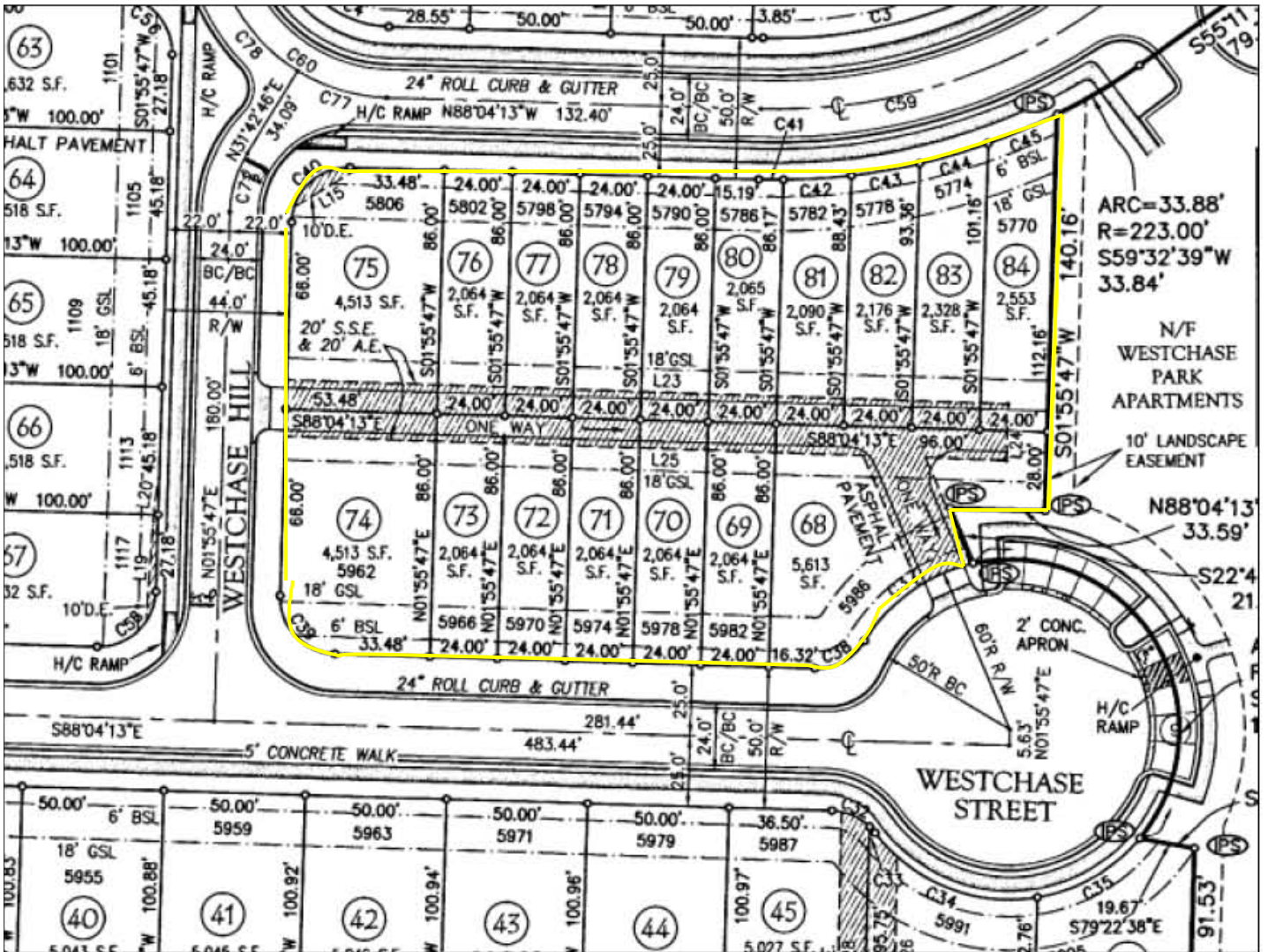
This information has been obtained from sources believed reliable. While we do not doubt its accuracy we have not verified it and make no guarantee, warranty, or representation about it.

Or visit us at  
[www.groupvi.com](http://www.groupvi.com)





# DEVELOPED TOWNHOME SITE FOR SALE



**James Clark**  
**770-389-9100**

Group Six Real Estate, LLC  
900 Westpark Dr, Suite 300  
Peachtree City, GA 30269  
Fax 770-631-7274

This information has been obtained from sources believed reliable. While we do not doubt its accuracy we have not verified it and make no guarantee, warranty, or representation about it.

Or visit us at  
[www.groupvi.com](http://www.groupvi.com)



## DEVELOPED TOWNHOME SITE FOR SALE

### Westchase Glen Atlanta, GA

- Location: Camp Creek Parkway at Fulton Industrial Blvd.
- Subdivision: Boatrock Road at Westchase Lane
- 17 Developed Townhome Lots
- Foreclosure: Bank REO
- Zoning: CUP (Community Unit Plan)
- Easy access to I-20 and I-285
- Clubhouse with swim, tennis and fitness
- Minutes to Hartsfield Jackson International Airport
- County: Fulton



**James Clark**  
**770-389-9100**

Group Six Real Estate, LLC  
900 Westpark Dr, Suite 300  
Peachtree City, GA 30269  
Fax 770-631-7274

This information has been obtained from sources believed reliable. While we do not doubt its accuracy we have not verified it and make no guarantee, warranty, or representation about it.

Or visit us at  
**[www.groupvi.com](http://www.groupvi.com)**