



# MEDICAL SPACE FOR LEASE TENANT / OWNERSHIP OPTION AVAILABLE

**Westridge Medical  
Office Building  
70 Westridge Parkway  
McDonough, GA**

- 11,116/RSF Medical Office Building
- 1,700 – 4,600 SF Available
  - 1<sup>st</sup> FL – 3,005/RSF
  - 2<sup>nd</sup> FL – 1,244/RSF
- Two Story Class “A” Office Building
- Less than 1 Mile to I-75
- Adjacent to the new Publix and Residential Developments
- Hospital Size Elevator
- Lease Term 5-10 Years
- Existing Tenants
  - General & Cosmetic Dentists
- County: Henry

For more information

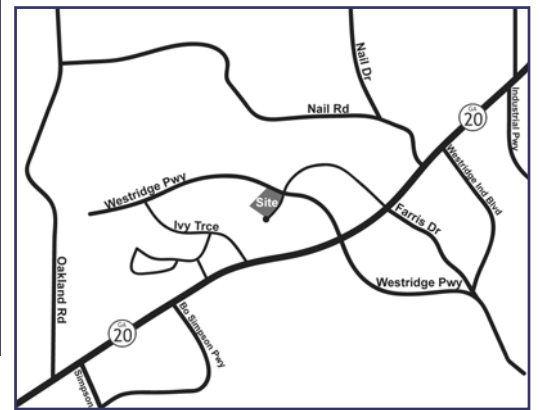
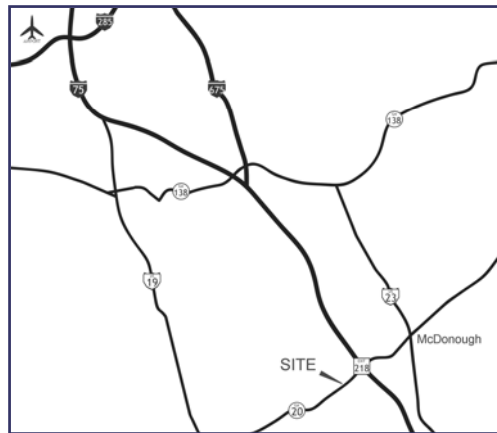
**770-389-9100**

Group Six Real Estate, LLC  
900 Westpark Dr, Suite 300  
Peachtree City, GA 30269  
F 770-631-7274

This information has been obtained from sources believed reliable. While we do not doubt its accuracy we have not verified it and make no guarantee, warranty, or representation about it.

Or visit us at

**www.groupvi.com**

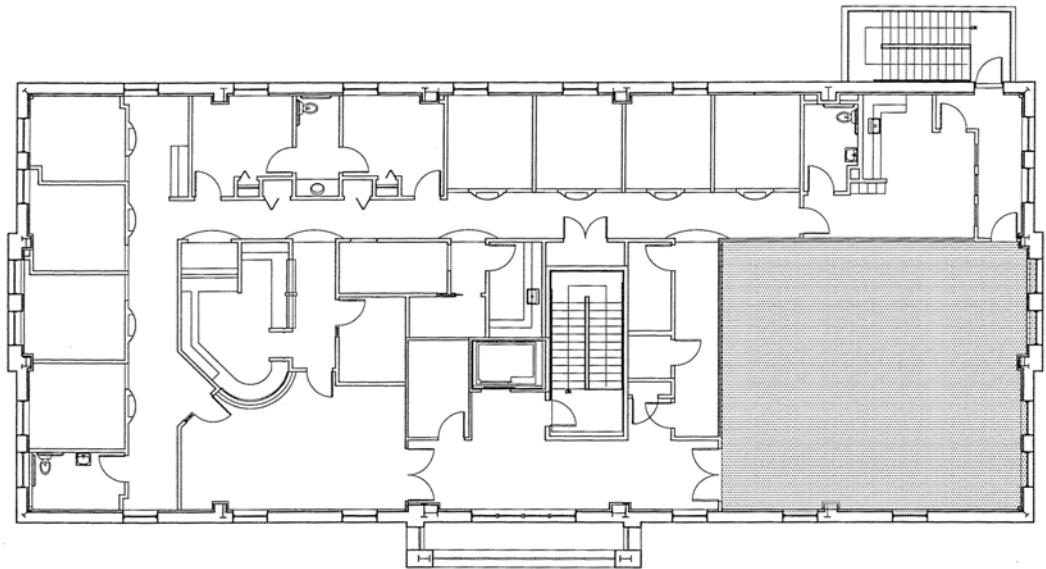




# MEDICAL SPACE FOR LEASE TENANT / OWNERSHIP OPTION AVAILABLE

**Westridge Medical  
Office Building  
70 Westridge Parkway  
McDonough, GA**

- 11,116/RSF Medical Office Building
- 1,700 – 4,600 SF Available
  - 1<sup>st</sup> FL – 3,005/RSF
  - 2<sup>nd</sup> FL – 1,244/RSF
- Two Story Class “A” Office Building
- Less than 1 Mile to I-75
- Adjacent to the new Publix and Residential Developments
- Hospital Size Elevator
- Lease Term 5-10 Years
- Existing Tenants
  - General & Cosmetic Dentists
- County: Henry



2ND FLOOR  
FUTURE TENANT AREA  
1,108 SQ FT

For more information

**770-389-9100**

Group Six Real Estate, LLC  
900 Westpark Dr, Suite 300  
Peachtree City, GA 30269  
F 770-631-7274

This information has been obtained from sources believed reliable. While we do not doubt its accuracy we have not verified it and make no guarantee, warranty, or representation about it.

Or visit us at

**[www.groupvi.com](http://www.groupvi.com)**

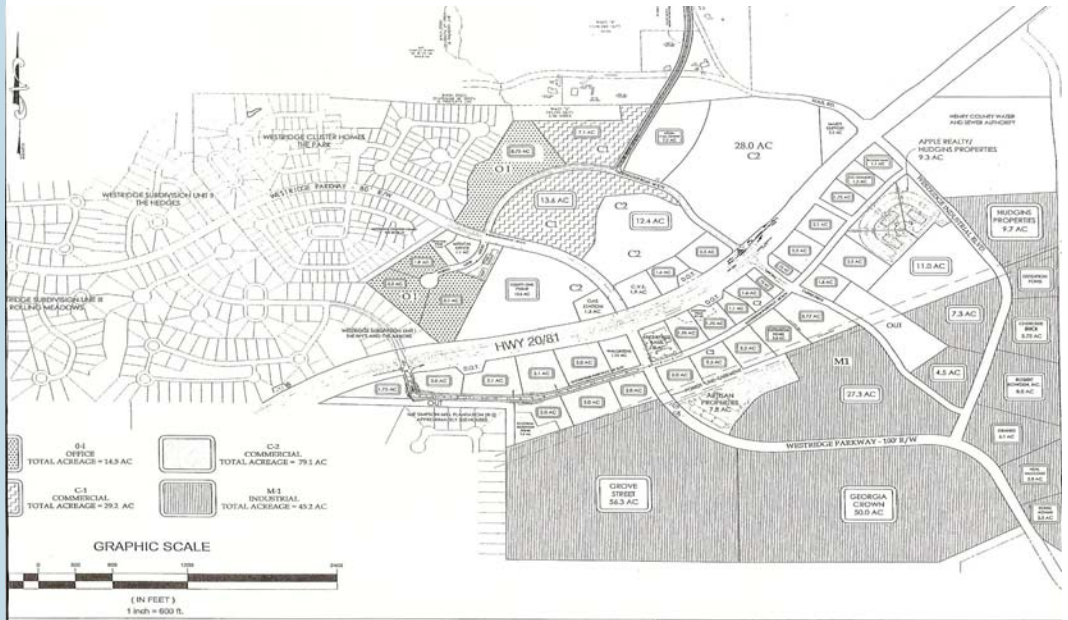




# MEDICAL SPACE FOR LEASE TENANT / OWNERSHIP OPTION AVAILABLE

**Westridge Medical  
Office Building  
70 Westridge Parkway  
McDonough, GA**

- 11,116/RSF Medical Office Building
- 1,700 – 4,600 SF Available
  - 1<sup>st</sup> FL – 3,005/RSF
  - 2<sup>nd</sup> FL – 1,244/RSF
- Two Story Class “A” Office Building
- Less than 1 Mile to I-75
- Adjacent to the new Publix and Residential Developments
- Hospital Size Elevator
- Lease Term 5-10 Years
- Existing Tenants
  - General & Cosmetic Dentists
- County: Henry



For more information

**770-389-9100**

**Group Six Real Estate, LLC  
900 Westpark Dr, Suite 300  
Peachtree City, GA 30269  
F 770-631-7274**

This information has been obtained from sources believed reliable. While we do not doubt its accuracy we have not verified it and make no guarantee, warranty, or representation about it.

Or visit us at

**[www.groupvi.com](http://www.groupvi.com)**